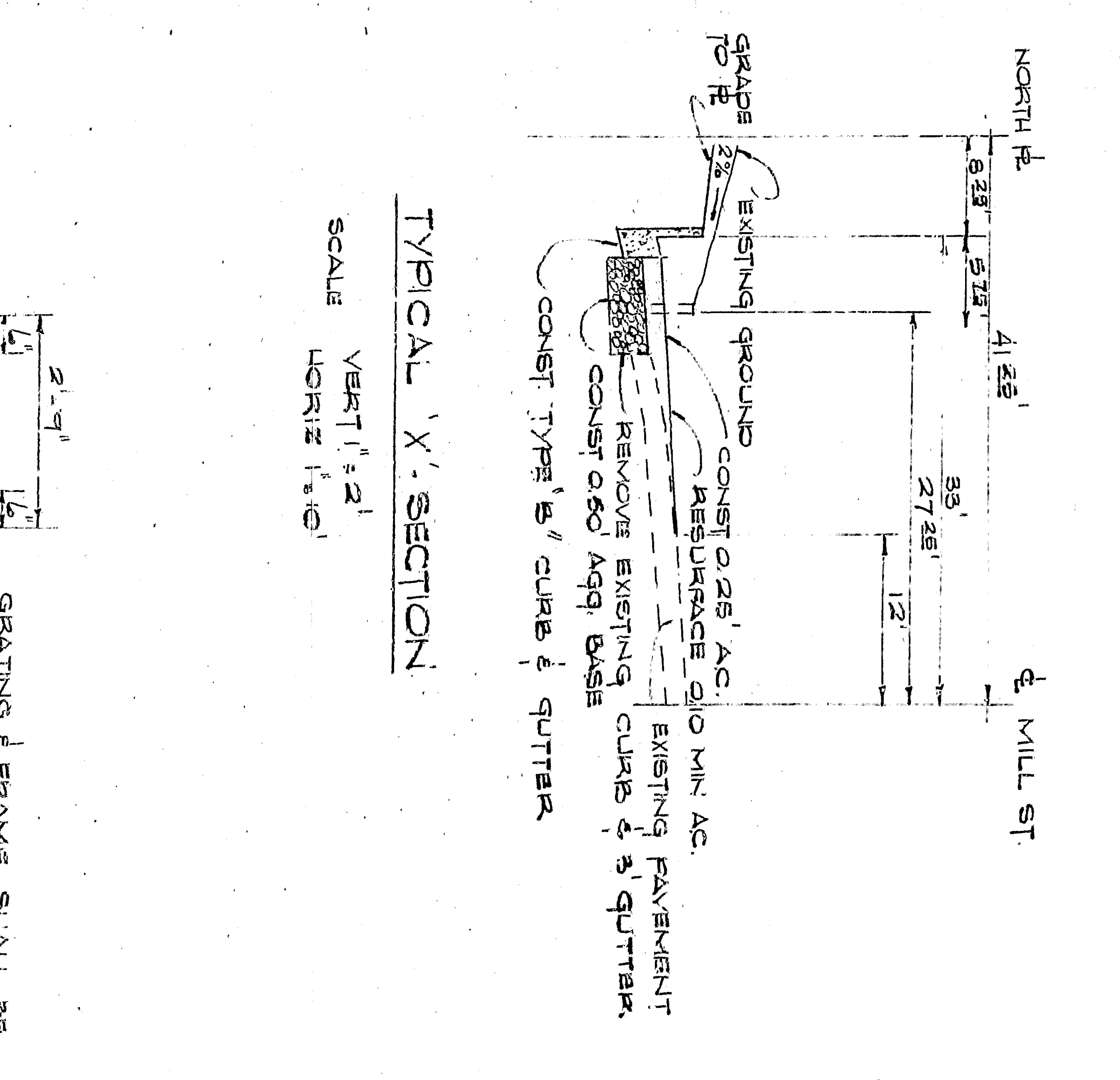


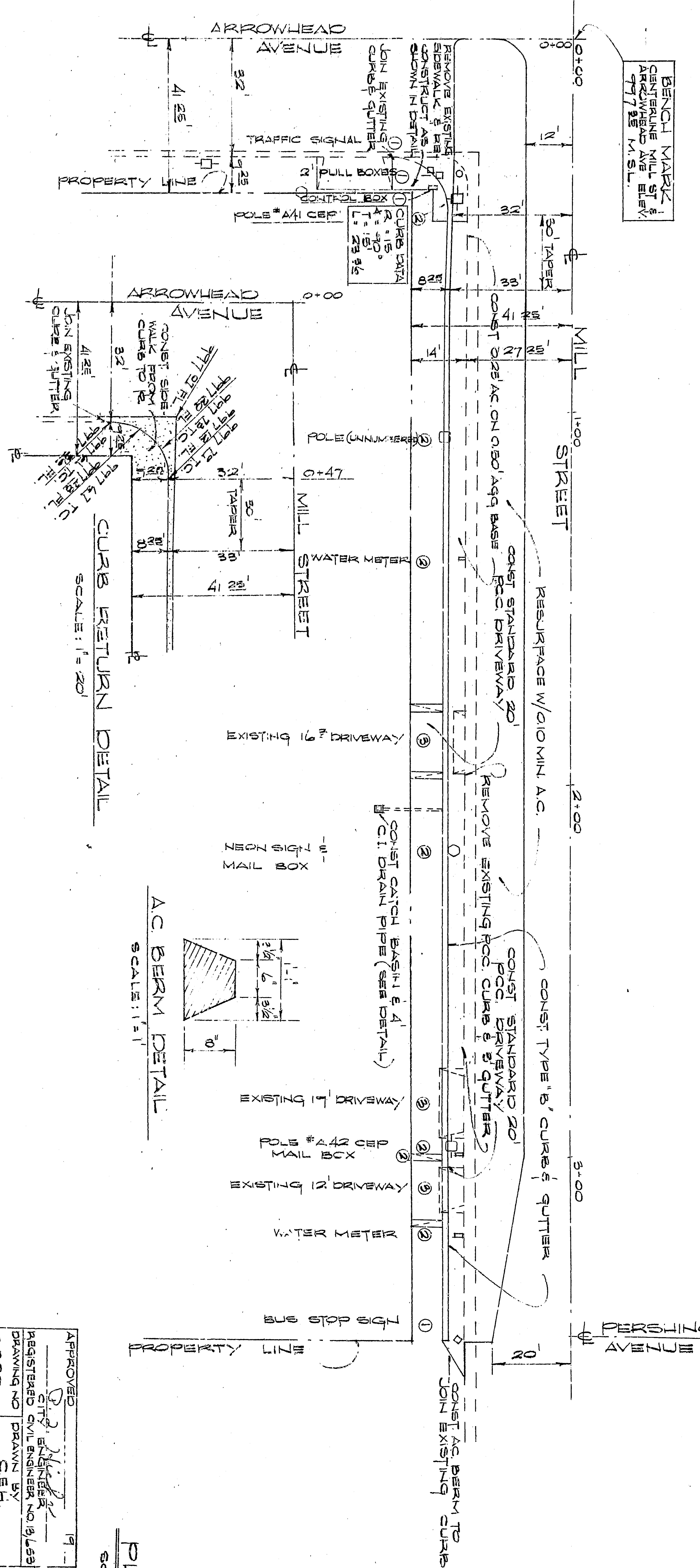
**PROFILE**  
 VERT. 1" = 2'  
 HORIZ. 1" = 20'

**GENERAL NOTES**

1. ALL WORK EMPLOYED ON THIS PLAN SHALL BE DONE IN CONFORMITY WITH APPLICABLE PROVISIONS OF STANDARD SPECIFICATIONS NO. 2271 AND STANDARD DRAWINGS NO. 2821 ON FILE IN THE OFFICE OF THE CITY ENGINEER.
2. RECESS CURBS FOR DRIVEWAYS WHERE NECESSARY. EXACT LOCATIONS AND WIDTHS TO BE DETERMINED IN THE FIELD.
3. OBSTRUCTIONS (MARKINGS ON PLAN) AS DIRECTED BY THE ENGINEER TO BE REMOVED & RELOCATED UNDER THIS CONTRACT. (FOOTINGS ON STREET SIGNS SHALL BE CLASS "B" CONCRETE SAME AS ORIGINAL INSTALLATION) TO BE REMOVED AND RELOCATED BY OTHERS.
4. TO BE REMOVED UNDER THIS CONTRACT.

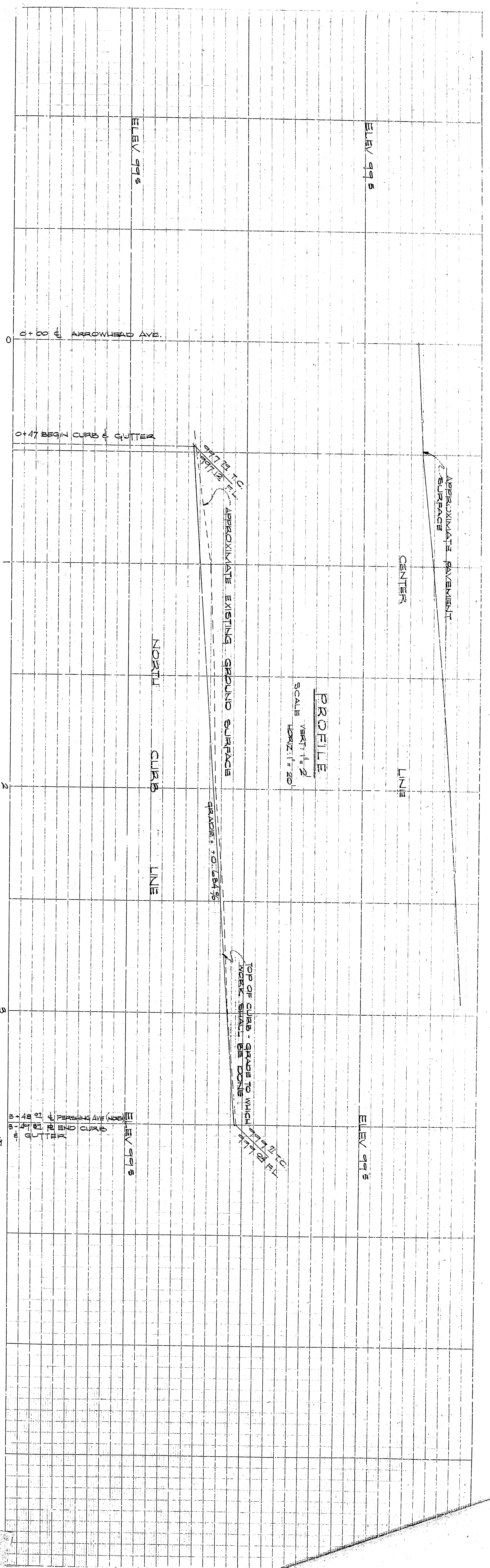


**TYPICAL 'X' SECTION**  
 VERT. 1" = 2'  
 HORIZ. 1" = 10'



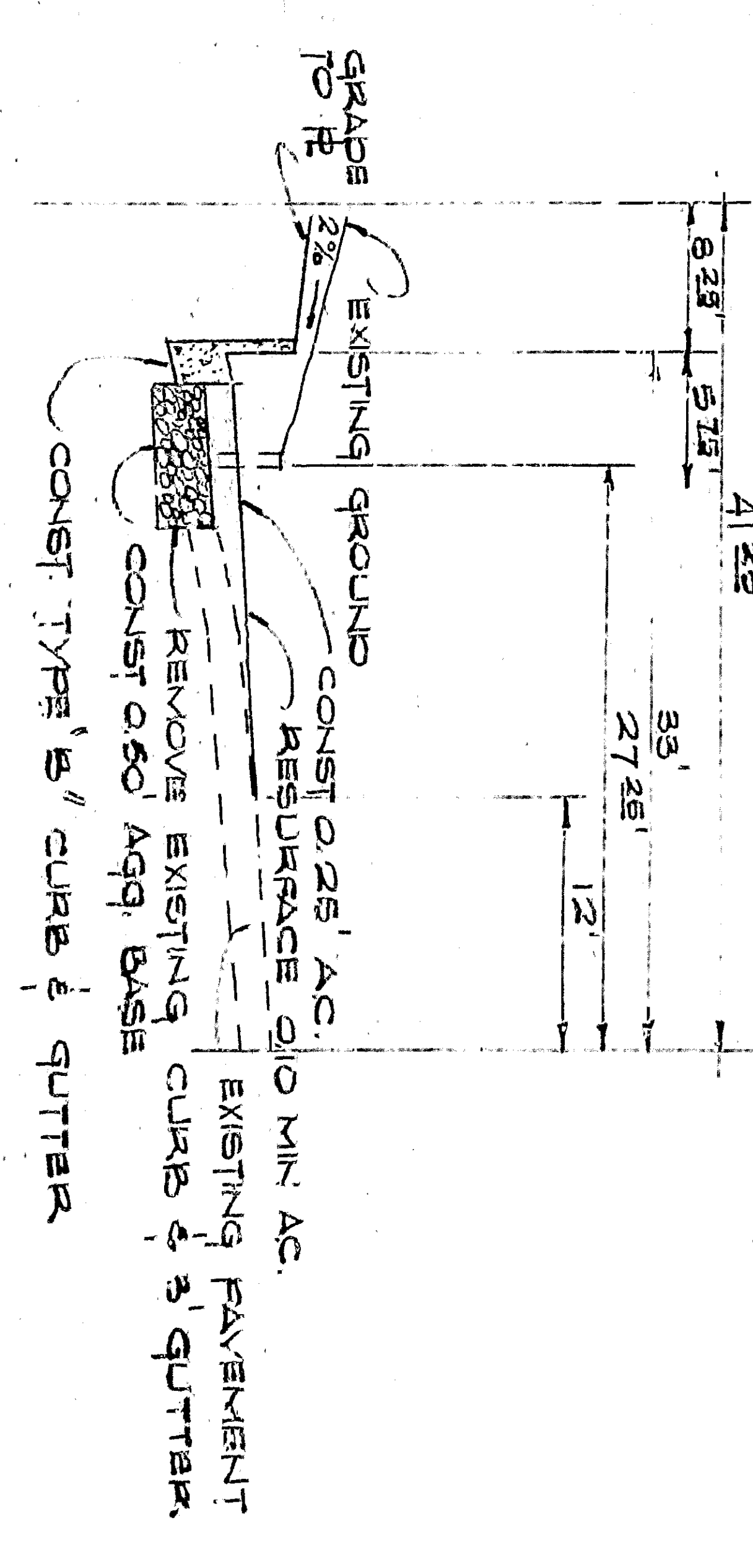
**PLAN**  
 SCALE: 1" = 20'

APPROVED	CITY OF SAN BERNARDINO
DRAWN BY	IMPROVEMENT PLAN
CHECKED BY	SOUTH EAST CORNER
SHEET NO.	MILL STREET & ARROWHEAD AVENUE
SHEETS OF	

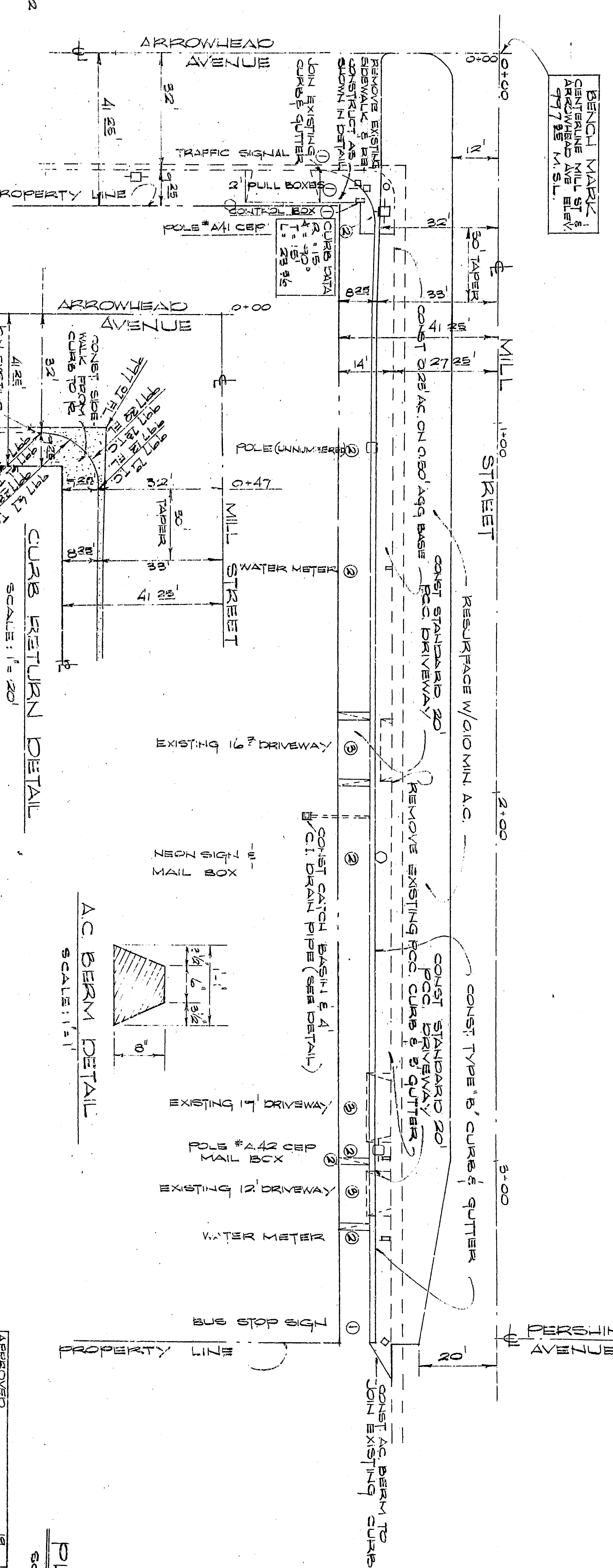
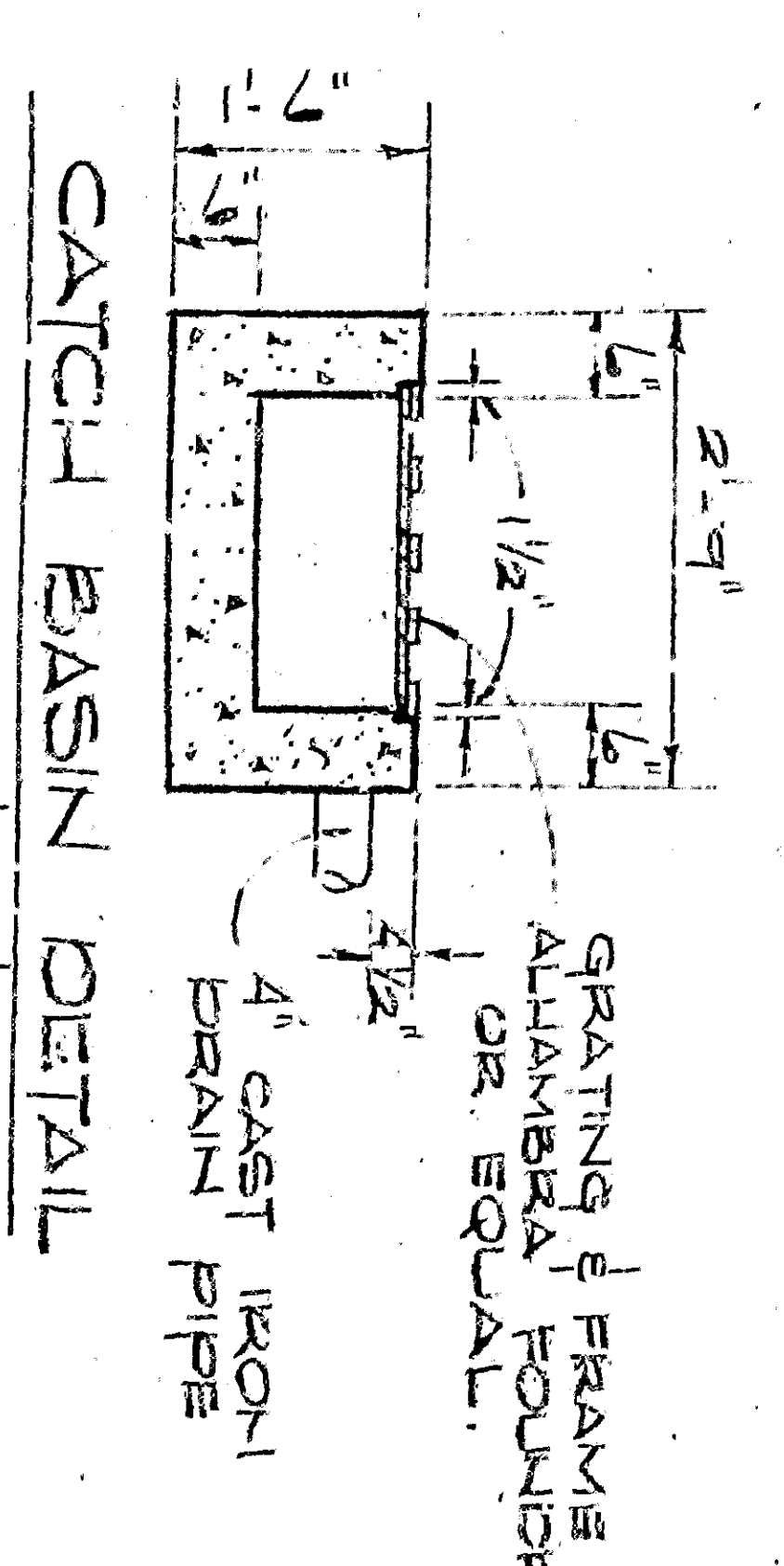


**PROFILE**  
 VERT. 1" = 2'  
 HORIZ. 1" = 20'

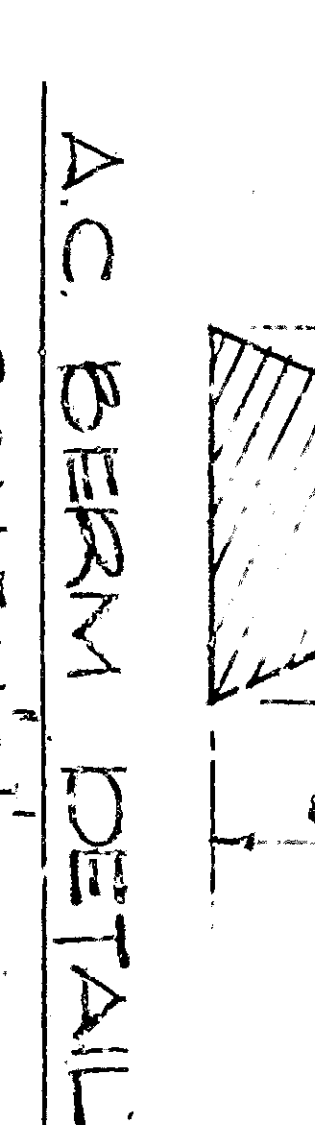
NORTH  
 MILL ST  
 41.25'  
 27.25'  
 12'



**TYPICAL 'X' SECTION**  
 VERT. 1" = 2'  
 HORIZ. 1" = 10'



**PLAN**  
 SCALE: 1" = 20'

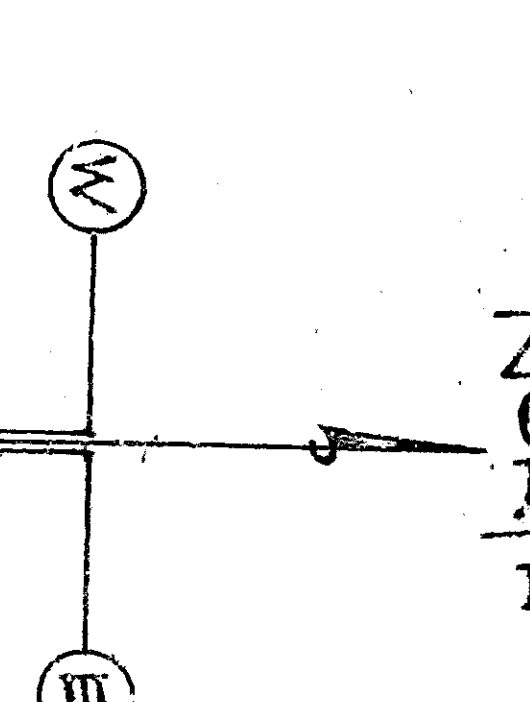


**AC BERM DETAIL**  
 SCALE: 1" = 1'

**CURB RETURN DETAIL**  
 SCALE: 1" = 20'

**GENERAL NOTES**

1. ALL WORK EMPLOYED ON THIS PLAN SHALL BE DONE IN CONFORMITY WITH APPLICABLE PROVISIONS OF STANDARD SPECIFICATIONS NO. 2271 AND STANDARD DRAWINGS NO. 2821 ON FILE IN THE OFFICE OF THE CITY ENGINEER.
2. RECESS CURB FOR DRIVEWAYS WHERE NECESSARY. EXACT LOCATIONS AND WIDTH TO BE DETERMINED IN THE FIELD.
3. OBSTRUCTIONS (MARKINGS ON PLAN) AS DIRECTED BY THE ENGINEER TO BE REMOVED & RELOCATED UNDER THIS CONTRACT. FOOTINGS ON STREET SIGNS SHALL BE CLASS 'B' CONCRETE SAME AS ORIGINAL INSTALLATION.)
4. TO BE REMOVED AND RELOCATED BY OTHERS.
5. TO BE REMOVED UNDER THIS CONTRACT.



APPROVED	CITY OF SAN BERNARDINO
DRAWN BY	IMPROVEMENT PLAN
CHECKED BY	SOUTH EAST CORNER
SHEET NO.	MILL STREET & ARROWHEAD AVENUE
SHEETS OF	